

## New to 2026

Dave, **The Honest Mechanic**, has offered his parking lot for us to park our trailers. This is a huge help for the logistics at the event by freeing up space at the Philo parking lot.

You will still unload your car and stuff at the hill and then bring your trailer down to Dave's. Not everyone needs to move their trailer down there, but the more trailers at Dave's the better the event.

Address:

5692 Ethan Allen Hwy, Charlotte, VT

It is **very important** that you follow the specific map instructions on the next page, drive slowly on the shared drive way, be quiet when unloading, and don't be there late or early. This is someone's neighborhood and we need to respect Dave's neighbors' space. Be nice, be invited back.

**Pay attention to the green line and don't take the red line.**

I believe the section with all the cars will be clear. Park your trailer there, keep the trailers close, and block your wheels.

Thank you Dave!

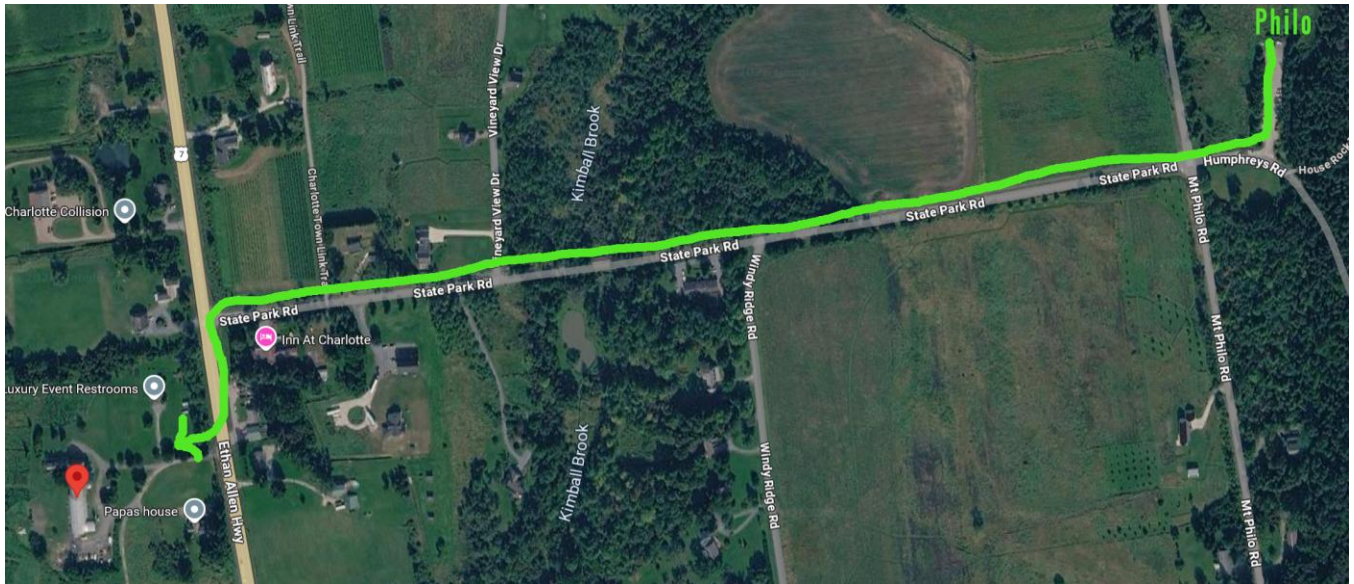


Proud supporter of the  
Historic Mt. Philo Hillclimb

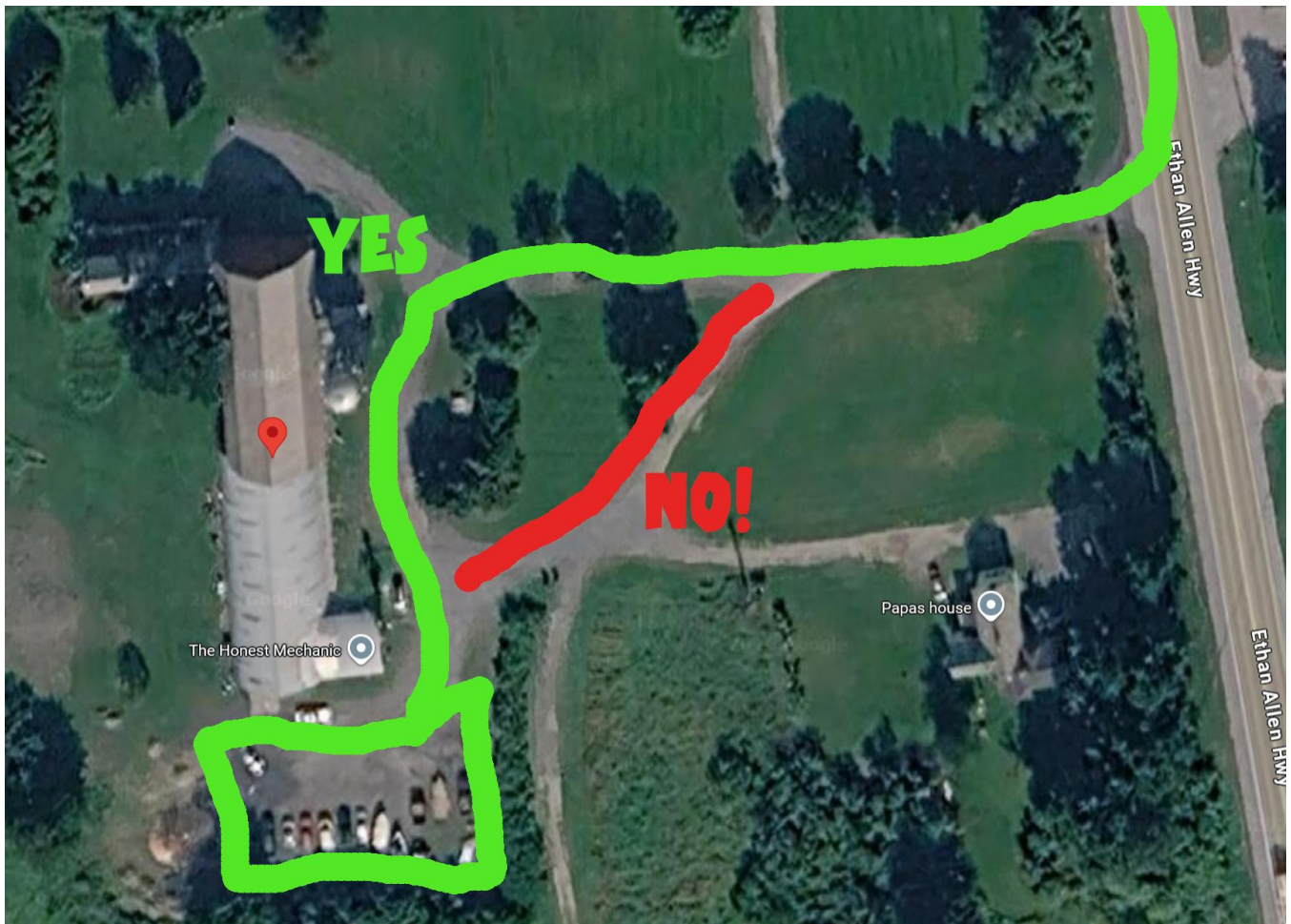
**HONEST WORK.  
FAIR PRICES.  
802-458-7848**

 **The Honest Mechanic**  
[www.thehonestmechanicvt.com](http://www.thehonestmechanicvt.com)  
5692 Ethan Allen Hwy, Charlotte, VT

**Path from Philo parking lot, State Park Road, south on Route 7 for a very short distance.**



**Take the green road coming and going. Stay off the red road!**



# Order your 2026 Mt. Philo t-shirt by March 30

Link to online order form: *Ordering opportunity has come and went. Sorry... bribes accepted.*

***You MUST order by March 30.***

Payment via cash, check, or Venmo at Philo.

Yes, we will bring any shirts that you ordered to other events in case you can't make it to Philo.

## Prices

Short sleeve \$30

Long sleeve \$35

**Upcharge for larger sizes** (we are passing along the actual cost):

2XL \$2

3XL \$3

4XL \$4

5 XL \$5



# 2026 Mt. Philo Hillclimb

May 01-03, 2026



## POINTS OF CONTACT

**Chairman:** Steve (SCCVermont@aol.com) 802-777-1000  
**Co-Chairman:** Chris (Bugeyerexvt@gmail.com) 802-922-3130  
**Worker Coordinator:** Rebekah (Rebekah.l.becker@outlook.com) 603-502-2942  
**Chief of Tech:** Patrick Martin 860-817-2596 and Gregory Wilcox 860-436-8434  
**Registrar:** Erik (erik@mrvre.com)

## REGISTRATION:

Entry fee includes lunches on both days of the event:  
\$200 for SCCV, SCCNH, and KSCC members  
\$210 for rally teams  
\$220 for non-members



**Online Registration:** <http://msreg.com/philo2026>

Online registration is open March 05 – April 25.

**Refunds** (full or partial) will only be issued if it doesn't cause a loss for the event; camping fees will be reduced from the refunded amount as this is a direct cost to the club (assuming that we do not have someone to take over the spot).

Limit of 50 cars for this event

**Note:** This is a muffled event. Mufflers are required.  
If you have any questions contact us.

## CAMPING AT MT. PHILO:

<https://www.hillclimb.org/forum/viewtopic.php?t=1452> (2026 reservations)



## MT. PHILO HILLCLIMB SPECIAL REQUIREMENTS

Please read, understand and follow the below rules for the Mt. Philo hillclimb.

- **The direction of traffic will change on the hill starting at noon on Friday (up the down road, down the up road).** This is to accommodate large vehicles to the top of the hill. This will remain in effect until the drivers' meeting on Saturday morning. Pay attention to posted signs!
- **No parking on the grass!**
- All tow vehicles, trailers, and non-race vehicles will need to be parked at the bottom of the hill in the lower parking lot. You must unload your car at the bottom and leave your trailer/truck there. Do not park in the grass outside of the parking area. **Leave the very end of the lower parking lot open for turning around.**
- You may only work on your car in the upper parking lot on the paved areas and must take proactive and reactive steps to ensure that oil is cleaned up.
- Don't do anything stupid. You will be told to leave.
- **GATE:** Someone will man the gate at the bottom of the hill until 5:30 PM+/- on Friday. After this time you will have to call Steve or Chris. Do not circumvent the gate... there is no reason for this since we have the combination. Do NOT give the combination to someone not directly involved with the event.
- **Tarps must be under all race vehicles at the top of the hill. Bring weights to hold down the tarp.**

## ROOKIE DRIVERS

- If you are new to driving at Mt. Philo, you will ride with an experienced driver in “FAM A” on Saturday. The goal of the ride along should be to learn the course from the instructions/advice from the experienced driver. You will then be in group B the rest of the day.

## THE SCHEDULE

### Friday:

Registration at bottom of the hill

Tech will be conducted in the upper parking lot

12:00 PM (noon) Arrive, unload, setup camp and get ready to work at 12:30

**12:30 PM to completion - Setup and sweep hill**

2:00 PM to 6:00 PM - Registration at the summit in the lodge or upper parking lot

**5:00 PM to dusk - Tech inspection at the upper parking lot**

### Saturday:

7:00 AM to 8:00 AM - Registration in the lodge

7:00 AM - Tech Inspection at the upper parking lot

7:30 AM - Workers meeting at the lower parking lot

**8:00 AM - Drivers Meeting at the upper parking lot**

8:30 AM to Noon - FAM and practice runs (Group A FAM/ timed runs, Group B FAM/ timed runs)

Noon to 1:00 PM - Lunch

1:15 PM to Closing - Practice runs

### Sunday:

7:00 AM to 7:30 AM - Tech and registration by appointment

7:30 AM - Workers meeting at the lower parking lot

**8:00 AM - Drivers Meeting at the upper parking lot**

8:30 AM to Noon - FAM and practice runs (Group A FAM/ timed runs, Group B FAM/ timed runs)

Noon to 1:00 PM - Lunch

1:15 PM to Closing - Timed runs

Closing to 3:00 PM - Hill cleanup and scoring

4:00 PM - Awards at the Lodge



